

The splittable cable entry that lives up to PFLITSCH standards



CABsea)



CABseal. Seals the cabinet.

Do you already seal with CABseal?

There's no way round CABseal if you're looking for a cable entry that seals cables reliably and guarantees optimal sealing from the control cabinet.

Seal it! With CABseal.

The art of simplicity

Splittable cable entries for pre-assembled and non-assembled cables in control cabinets and enclosures have long been the proven solution for time-saving and dependable installation.

So we asked ourselves how we could combine what has already been tried and tested with our typical PFLITSCH quality.

And we've come up with the answer:

CABseal
seal it!

CABseal – always the more sophisticated solution

» Unlimited modularity

Splittable cable entry system with flexibly equipped frames, where all frames and grommets are compatible. For quick, easy and reliable assembly.

» Adaptable in many ways

Cable grommets with flexible sealing lip geometry are designed for cables from 3 mm to 16 mm (small grommet GS) or from 16 mm to 33 mm (large grommet GL) and have a sealing range of 1.0 mm with an additional tolerance range of +/-0.3 mm.

» Consistently flexible

The CABseal frame can be equipped with a variety of cables of different cross-sections. For up to 40 cables per frame.

» Always IP 66

No more wondering whether the cable entry fulfils the necessary protection rating every time you start a new project. CABseal always provides IP 66 protection, unlike systems with product-dependent protection ratings.

» Separate strain relief available for all grommets

CABseal grommets with a strain relief lug enable separate strain relief with cable ties.

» Never any 'losable' small parts

CABseal frames have an integrated moulded seal. No additional flat gasket is required.

» Simple assembly throughout

CABseal is a modular system that's always easy to assemble – the same procedure every time. No "either or" but always identical. All you need is an Allen key.

The modular CABseal cable entry system

Assemble individually as you need it: with CABseal, all grommets can be freely positioned in the frames. This naturally also applies to multiple grommets. The integrated elastomer seal seals the frame reliably up to IP 66 – no other seals are required.



Choose from 4 frames

Suitable for the most common standard cut-outs: CABseal frame available in sizes 24, 16, 10 and 4.



Choose from a wide range of cable grommets

The ideal grommet for every cable cross-section. The small GS grommets fit in one grommet field while the large GL grommets require 4 fields.

Option of separate strain relief

GS grommets – the small ones



- » GS grommets for cable cross-sections from 3 mm to 16 mm
- » GL grommets for cable cross-sections from 16 mm to 33 mm
- » Double/multiple-cable grommets from 4 to 8 mm
- » Reliable sealing of cables with IP 66 protection
- » Blind grommets and plugs also available

GL grommets – the large ones



- » Spring/groove contour of the cable grommet prevents incorrect assembly.
- » Flexible sealing lip geometry allows compensation of cable tolerances.
- » In addition to the integrated strain relief, a cable tie that fixes the cable to the strain relief lug of the cable grommet can provide separate strain relief.
- » Strain relief can be positioned towards the inside or outside.

CABseal frame

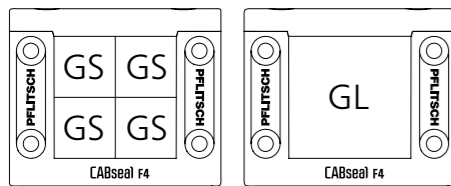
CABseal is offered in 4 frame sizes with 4, 6, 8 or 10 grommet fields. The dimensions of the frames are based on the most common standard cut-out sizes in control cabinets, so that only one CABseal frame is ever required per cut-out.

CABseal F4



Material	PA 6.6
Temperature range (min./max.)	-40 °C/+100 °C
Cut-out size	46 x 36-46
Dimensions (W x H x D)	72.8 x 61 x 20 mm
Packing unit	10
Article number	CAB F 4

Grommet positioning F4



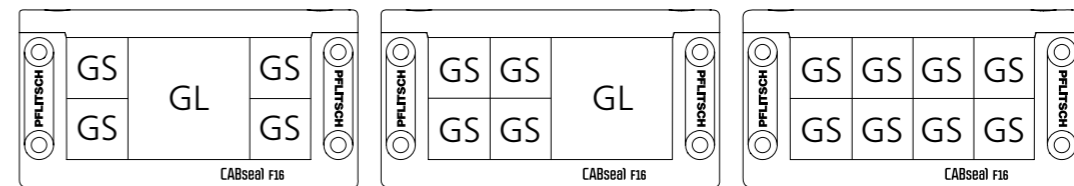
All CABseal frames achieve IP 66.

CABseal F16



Material	PA 6.6
Temperature range (min./max.)	-40 °C/+100 °C
Cut-out size	86 x 36-46
Dimensions (W x H x D)	116.5 x 61 x 20 mm
Packing unit	10
Article number	CAB F16

Grommet positioning F16

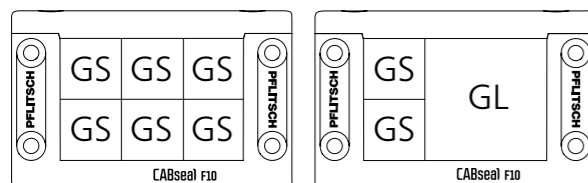


CABseal F10



Material	PA 6.6
Temperature range (min./max.)	-40 °C/+100 °C
Cut-out size	65 x 36-46
Dimensions (W x H x D)	96.5 x 61 x 20 mm
Packing unit	10
Article number	CAB F10

Grommet positioning F10

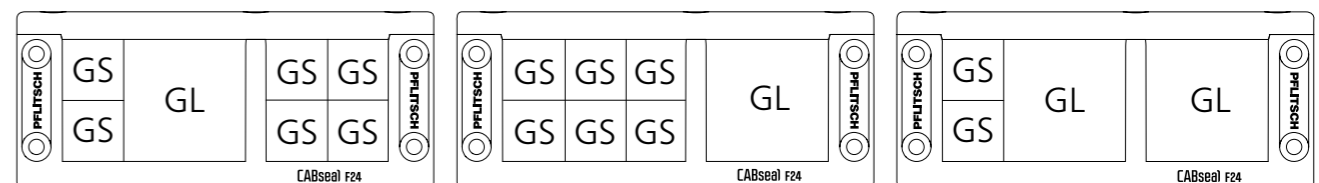


CABseal F24



Material	PA 6.6
Temperature range (min./max.)	-40 °C/+100 °C
Cut-out size	112 x 36-46
Dimensions (W x H x D)	143.5 x 61 x 20 mm
Packing unit	10
Article number	CAB F24

Grommet positioning F24



CABseal grommets and accessories

To enable the CABseal frame to be flexibly equipped, cable grommets are available in 2 sizes for any cable cross-section from 3 mm to 33 mm. The small version can additionally be supplied as single or multiple grommets. All grommets have slots on the side to make it easier to insert cables. The flexible sealing lip geometry allows compensation of cable tolerances and separate strain relief is possible with cable ties (positioned towards the inside or outside). Apart from the grommets, we also offer an Allen key with a T-grip as an accessory as well as blind grommets and plugs, which serve as placeholders for retro-installing cables.



GS grommets – small (TPE)

Article number	Sealing range (min./max. dia.) mm	Packing unit
CAB GS 0		20
CAB GS 4	4.0–3.0	20
CAB GS 5	5.0–4.0	20
CAB GS 6	6.0–5.0	20
CAB GS 7	7.0–6.0	20
CAB GS 8	8.0–7.0	20
CAB GS 9	9.0–8.0	20
CAB GS10	10.0–9.0	20
CAB GS11	11.0–10.0	20
CAB GS12	12.0–11.0	20
CAB GS13	13.0–12.0	20
CAB GS14	14.0–13.0	20
CAB GS15	15.0–14.0	20
CAB GS16	16.0–15.0	20



GS grommets – multiple (TPE)

Article number	Sealing range (min./max. Ø) mm	Number of cable entries	Packing unit
CAB GS2/5	5.0–4.0	2	20
CAB GS4/5	5.0–4.0	4	20
CAB GS2/6	6.0–5.0	2	20
CAB GS4/6	6.0–5.0	4	20
CAB GS2/7	7.0–6.0	2	20
CAB GS2/8	8.0–7.0	2	20



All CABseal grommets achieve IP 66.



GL grommets – large (TPE)

Article number	Sealing range (min./max. dia.) mm	Packing unit
CAB GL17	17.0–16.0	10
CAB GL18	18.0–17.0	10
CAB GL19	19.0–18.0	10
CAB GL20	20.0–19.0	10
CAB GL21	21.0–20.0	10
CAB GL22	22.0–21.0	10
CAB GL23	23.0–22.0	10
CAB GL24	24.0–23.0	10
CAB GL25	25.0–24.0	10

Article number	Sealing range (min./max. dia.) mm	Packing unit
CAB GL26	26.0–25.0	10
CAB GL27	27.0–26.0	10
CAB GL28	28.0–27.0	10
CAB GL29	29.0–28.0	10
CAB GL30	30.0–29.0	10
CAB GL31	31.0–30.0	10
CAB GL32	32.0–31.0	10
CAB GL33	33.0–32.0	10



Plug length: 20 mm

Grommet plugs (TPE)

Article number	Diameter mm	Suitable for grommets	Packing unit
CAB PL 4	4	GS 4 & GS 5	20
CAB PL 5	5	GS 2/5 & GS 4/5	20
CAB PL 6	6	GS 6 & GS 7	20
CAB PL 7	7	GS 2/7	20
CAB PL 8	8	GS 8 & GS 9	20
CAB PL10	10	GS10 & GS11	20
CAB PL12	12	GS12 & GS13	20
CAB PL14	14	GS14 & GS15	20
CAB PL16	16	GS16	20



Tool with T-grip for installing CABseal frames

Article number	Hexagon size	Packing unit
CAB tool	4 mm	1

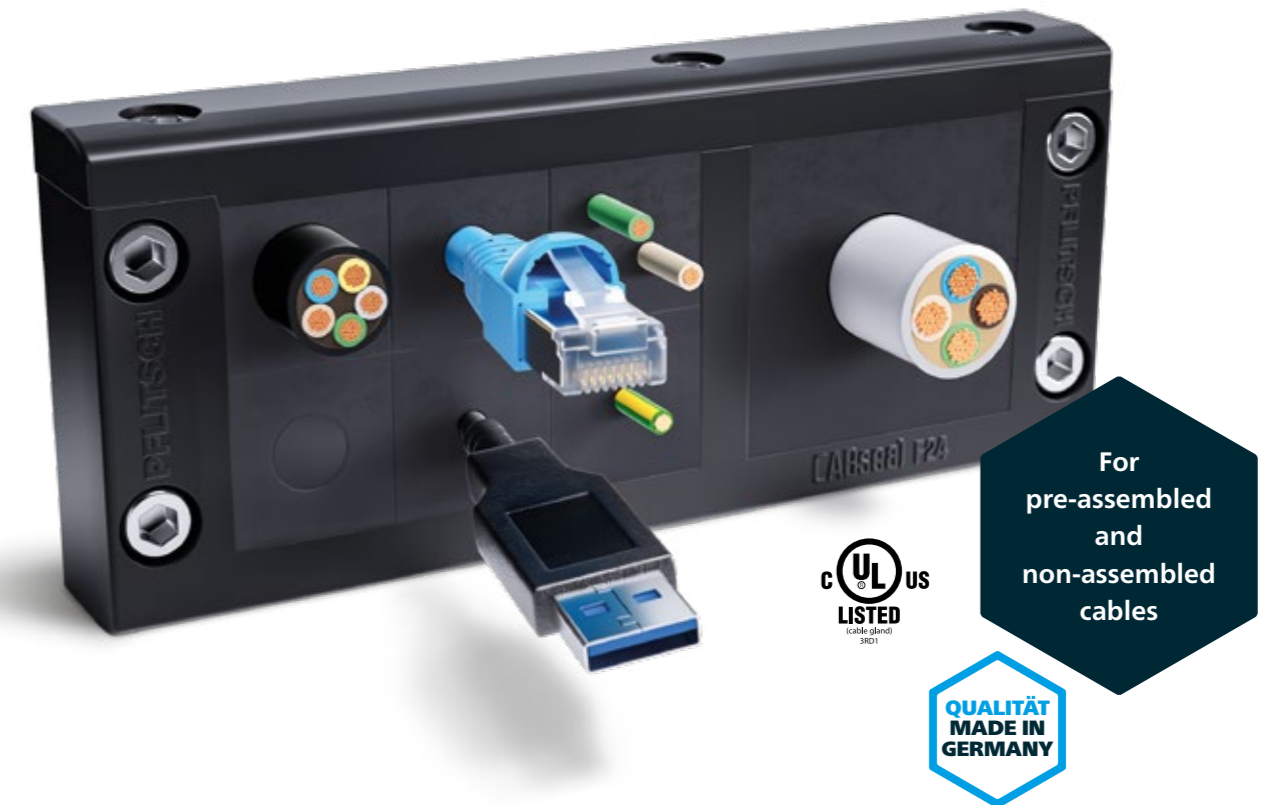
CABseal simply combines all benefits

Flexible and time-saving

- » **Splittable system**
Equip, install, remove and re-equip with pre-assembled or non-assembled cables at any time. All you need is an Allen key.
- » **Grommets with sealing lips for cables from 3 mm to 33 mm**
Maximum grommet positioning flexibility
- » **Double and quadruple grommets**
High packing density is not a problem
- » **Blind grommets and plugs**
Placeholders for retro-installation
- » **1 to 40 cables per frame**
CABseal F4 seals up to 16 max. 6 mm cables,
CABseal F24 seals up to 40 max. 6 mm cables
- » **Assembly aid**
Makes inserting the cable grommets even easier
- » **Designed for all common sizes of cut-out**
Suitable for standard cut-outs and typical hole patterns

Error-preventing, safe and dependable

- » **Splittable cable grommets for pre-assembled cables**
Guaranteed warranty for pre-assembled cables, as the connectors don't have to be dis- and reassembled to feed them through, avoiding assembly errors at the same time
- » **Grommets with a sealing range of up to 1.0 mm and an additional tolerance range of ± 0.3 mm**
The flexible sealing lip geometry adapts to the cables.
- » **Integrated elastomer frame seal**
No additional flat gasket required
- » **Strain relief**
Cable grommets with strain relief lugs.
Separate strain relief with cable ties optional.
- » **Optimal tightness**
IP 66, even with multiple grommets



Robust and versatile

- » **Temperature range -40 °C to $+100$ °C**
Suitable for a wide range of applications
- » **Installation height of just 20 mm**
For space-saving installation
- » **Robust frame**
Made from glass fibre reinforced polyamide

Quality made by PFLITSCH

- » UL Listed certification,
UL Type rating 4X indoor use only, 5
- » RoHS-certified, halogen- and silicone-free
- » Flammability rating UL 94-V0
- » **PFLITSCH quality Made in Germany**

PFLITSCH GmbH & Co. KG

Ernst-Pflitsch-Straße 1 · 42499 Hückeswagen · Germany

T +49 2192 911-0 · info@pflitsch.de · www.pflitsch.de

Subject to technical modifications without notice. Errors excepted.

Some of the product names used in this brochure are registered trademarks. You can find an overview of the trademarks owned by PFLITSCH GmbH & Co. KG and that apply at least within Germany at www.pflitsch.de/en/imprint.

All previous and older versions shall cease to be valid upon publication of this brochure. We invite anyone interested in our products to contact us. Should you do so via the communication channels cited in this brochure and on our website, such as our telephone number or e-mail address, we ask you to take note of our declaration on data protection under the header "Privacy Policy" on our website www.pflitsch.de/en.

Broschüre CABseal EN | 09.2023 | 152594 | 152625+